

Decode for June 26 & July 26 Sixth Seal

A	1	26	The Beginning of the End
B	2	25	
C	3	24	
D	4	23	
E	5	22	
F	6	21	
G	7	20	
H	8	19	
I	9	18	
J	10	17	
K	11	16	
L	12	15	
M	13	14	
N	14	13	
O	15	12	
P	16	11	
Q	17	10	
R	18	9	
S	19	8	
T	20	7	
U	21	6	
V	22	5	
W	23	4	
X	24	3	
Y	25	2	
Z	26	1	The End of the Beginning

Decode for Psalm 27? Of Eternity?

<u>Romans</u>				(+)	(-)
	A	1	26	27	25
	B	2	25	27	23
100	C	3	24	27	21
500	D	4	23	27	19
	E	5	22	27	17
	F	6	21	27	15
	G	7	20	27	13
	H	8	19	27	11
1	I	9	18	27	9
	J	10	17	27	7
	K	11	16	27	5
50	L	12	15	27	3
IVI - 7,1000	M	13	14	27	1
IV - 6	N	14	13	27	-1
Eternity, Pi	O	15	12	27	-3
	P	16	11	27	-5
	Q	17	10	27	-7
	R	18	9	27	-9
	S	19	8	27	-11
	T	20	7	27	-13
	U	21	6	27	-15
V - 5	V	22	5	27	-17
VV - 10,55	W	23	4	27	-19
10	X	24	3	27	-21
	Y	25	2	27	-23
	Z	26	1	27	-25

Decode for Genesis = 111 & 78 (see Psalm 78)

7 letters - July, Revelation mirroring Genesis

	A	1	26	
	B	2	25	
	C	3	24	
	D	4	23	
	E	5	22	
	F	6	21	
	G	7	20	
	H	8	19	
	I	9	18	
	J	10	17	
	K	11	16	
	L	12	15	
negative	M	13	14	
No	N	14	13	Pi
	O	15	12	
harm	P	16	11	
	Q	17	10	
	R	18	9	
	S	19	8	
	T	20	7	
	U	21	6	
Rev. 9:11	V	22	<u>5</u>	11&1 o'clock direction
	W	23	4	2V - 2*11=22
	X	24	3	
	Y	25	<u>2</u>	
	Z	26	<u>1</u>	Jul-26

180 degrees rainbow arc flood

X

A	1	26	26
B	2	25	50
C	3	24	72
D	4	23	92
E	5	22	110
F	6	21	126
G	7	20	140
H	8	19	152
I	9	18	162
J	10	17	170
K	11	16	176
L	12	15	180
M	13	14	182
N	14	13	182
O	15	12	180
P	16	11	176
Q	17	10	170
R	18	9	162
S	19	8	152
T	20	7	140
U	21	6	126
V	22	5	110
W	23	4	92
X	24	3	72
Y	25	2	50
Z	26	1	26

12-3pm

darkness

freedom no time midnight eternity

rainbow - flood

	A	1	26
	B	2	25
	C	3	24
	D	4	23
x2	E	5	22
	F	6	21
	G	7	20
	H	8	19
	I	9	18
	J	10	17
	K	11	16
	L	12	15
	M	13	14
	N	14	13
	O	15	12
	P	16	11
	Q	17	10
	R	18	9
	S	19	8
	T	20	7
	U	21	6
	V	22	5
	W	23	4
	X	24	3
	Y	25	2
	Z	26	1

S-EVE-N = 70

70 + 7 = 77 = July 7

7/7 starts 3 Paul's Shipwrecks

May 22 Greatest EQ historically

May-22

Decode of Pi - 911 Attack

Pi - circle rainbow flood

A	1	26
B	2	25
C	3	24
D	4	23
E	5	22
F	6	21
G	7	20
H	8	19
I	9	18
J	10	17
K	11	16
L	12	15
M	13	14
N	14	13
O	15	12
P	16	11
Q	17	10
R	18	9
S	19	8
T	20	7
U	21	6
V	22	5
W	23	4
X	24	3
Y	25	2
Z	26	1

Decode for July 25-26 (1 day)

	A	1	26	
	B	2	25	
	C	3	24	
	D	4	23	
	E	5	22	May 22 greatest EQ historically
	F	6	21	
	G	7	20	
	H	8	19	
	I	9	18	
	J	10	17	
	K	11	16	
	L	12	15	
	M	13	14	
Pi/911	N	14	13	
	O	15	12	
	P	16	11	
	Q	17	10	
	R	18	9	
	S	19	8	
psalm 20	T	20	7	rest, sabbath, Sunday
	U	21	6	
	V	22	5	
square	W	23	4	psalm 23 - death, darkness
	X	24	3	
	Y	25	2	two
flood	Z	26	1	one, 26+1=psalm 27

Extra confirmations

Decode for Apple California Company

tree of the knowledge of good and evil

Jul-26 x2

A	1	26
B	2	25
C	3	24
D	4	23
E	5	22
F	6	21
G	7	20
H	8	19
I	9	18
J	10	17
K	11	16
L	12	15
M	13	14
N	14	13
O	15	12
P	16	11
Q	17	10
R	18	9
S	19	8
T	20	7
U	21	6
V	22	5
W	23	4
X	24	3
Y	25	2
Z	26	1



Adam ate the fruit
Eve ate the fruit
Genesis 3:6

x2

sin, disobedience
wrath of God

Pi again

California will have 3 Paul's Shipwrecks
May 22 - greatest earthquake historically

Decode for AV (Jewish month 5)

135 - glory, veil, unleavened bread, burnt offering, gather, kingdom

A	1	26
B	2	25
C	3	24
D	4	23
E	5	22
F	6	21
G	7	20
H	8	19
I	9	18
J	10	17
K	11	16
L	12	15
M	13	14
N	14	13
O	15	12
P	16	11
Q	17	10
R	18	9
S	19	8
T	20	7
U	21	6
V	22	5
W	23	4
X	24	3
Y	25	2
Z	26	1



AV merged together

W M 4x V

Diamond Masonic symbol

2x X 4x 45° 2x 135° 40°



69 aka July	22	devil horn	V	22	5	12			
	23						W	23	4
	24								
			Y	25	2				
			Z	26	1				

6th seal: Psalm 135 - death of first borth
 Psalm 45 - bride of Christ marriage
 40 - wilderness, world, fasting, temptations, harvest, judgment, warning

Decode for AV - month 5

A	1	26
B	2	25
C	3	24
D	4	23
E	5	22
F	6	21
G	7	20
H	8	19
I	9	18
J	10	17
K	11	16
L	12	15
M	13	14
N	14	13
O	15	12
P	16	11
Q	17	10
R	18	9
S	19	8
T	20	7
U	21	6
V	22	5
W	23	4
X	24	3
Y	25	2
Z	26	1

July 26 global earth shaking

May 22 - greatest earthquake historically

F	24/7	Av 8	24/7-25/7	Av 9	Av 9
SA	25/7	Av 9	25/7-26/7	Av 10	Av 10
SU	26/7	<u>Av 10</u>	26/7-27/7	Av 11	Av 11

Av 9 = disaster day historically, why then July 26?
Remember Erin's 3 keys to unlock the timepiece!
Enoch, Elijah, Jewish Calendars merged!

July 25 = July 26, both have Av 10!

Thus, July 26 = Av 9!

See how Av 10 will be a fast day

July 26 in Israel's time - Paradise confirmation!

	Alphabetical num.		Capitals					Lower Caps		
A	1	26	5	7			a	Pi		
B	2	25	2 arcs	Pi			b	12		
C	3	24	1 arc	180°			c			
D	4	23	1 arc	180°			d	Pi	12	6
E	5	22	666	333			e	power		
F	6	21	6	66	33		f	9		
G	7	20	power	No Pi			g	Pi	OJ	
H	8	19	66	12,12			h			
I	9	18	12	6			i			
J	10	17	12,12				j			
K	11	16	1	5	12	6	k			
L	12	15	12	3			l	6		
M	13	14	66				m			
N	14	13	West Z	12	6		n			
O	15	12	eternity	Pi	360°		o			
P	16	11	1 arc	6			p			
Q	17	10	eternity	Pi	360°	4	q	6		
R	18	9	6	1 arc	5		r	2	12	
S	19	8	No Pi	12	6		s			
T	20	7	9	3	6		t	cross	12	
U	21	6	12,12				u			
V	22	5	11	1			v			
W	23	4	11	1			w			
X	24	3	11	1	7	5	x			
Y	25	2	11	1	6		y	7		
Z	26	1	9	3			z			

Decode the faces

A	1	26
B	2	25
C	3	24
D	4	23
E	5	22
F	6	21
G	7	20
H	8	19
I	9	18
J	10	17
K	11	16
L	12	15
M	13	14
n	14	13
O	15	12
P	16	11
Q	17	10
R	18	9
S	19	8
T	20	7
U	21	6
V	22	5
W	23	4
X	24	3
Y	25	2
Z	26	1

rainbow arc = flood judgment = sad!



Pi 3.141 rainbow



6+21=psalm 27 (house of the Lord)

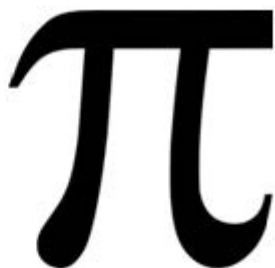
No rainbow = no wrath = happy!

death/transformation July 24

Jul-26

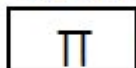
Decode for Hebrew Pi

A	1	26
B	2	25
C	3	24
D	4	23
E	5	22
F	6	21
G	7	20
H	8	19
I	9	18
J	10	17
K	11	16
L	12	15
M	13	14
N	14	13
O	15	12
P	16	11
Q	17	10
R	18	9
S	19	8
T	20	7
U	21	6
V	22	5
W	23	4
X	24	3
Y	25	2
Z	26	1



Pi

Hebrew alphabets looking like Pi
origin: courtyard - square! July 26!



Heth (8th letter)



8 = eternity/ new beginning

Heth - terror, ruin, destruction

Decode for Ides of March

		<u>Romans</u>				(+)	(-)	Rain = 66 - June 6			
				A	1	26	27	25			
				B	2	25	27	23			
			100	C	3	24	27	21			
			500	D	4	23	27	19			
				E	5	22	27	17			
		6		F	<u>6</u>	21	27	15	9		
psalm 30	30	7		G	7	20	27	13	69	hiding place salvation	
daybreak		8		H	8	19	27	11			
end		9	1	I	<u>9</u>	18	27	9			6
				J	10	17	27	7			
				K	11	16	27	5			
		Pentecost	50	L	12	15	27	3	12		
		Rest	IVI - 7,1000	M	13	14	27	1	First Call	27	psalm 27
			IV - 6	N	14	13	27	-1			
			Eternity, Pi	O	15	12	27	-3	15		
	69, psalm 91			P	16	11	27	-5			
6th seal	^	mountain		Q	17	10	27	-7			
locust	east/south	18		R	18	<u>9</u>	27	-9	9	water/flood (world)	
psalm 78	78	19		S	19	8	27	-11	69		
freedom		20		T	20	7	27	-13			
Holy Spirit	world	21		U	21	<u>6</u>	27	-15	6	air/elevation (bride)	
tribe of Judah			V - 5	V	22	5	27	-17			
			VV - 10,55	W	23	4	27	-19			
			10	X	24	3	27	-21			
				Y	25	2	27	-23			
				Z	26	1	27	-25			

Decode for July + dates

	A	1	26	333-death, resurrection, ascension
	B	2	25	33-death & resurrection after 3 days of darkness
	C	3	24	22+11=33, 22=The End of the End, Death
	D	4	23	11 - judgment, confusion, east/west coasts
	E	5	22	3*11=33, 3 of 11, 3 Paul's shipwrecks CA & NYC
	F	6	21	
	G	7	20	
	H	8	19	
	I	9	18	
	J	10	17	
	K	11	16	
	L	12	15	
	M	13	14	
	N	14	13	
	O	15	12	
	P	16	11	
	Q	17	10	
	R	18	9	
	S	19	8	
	T	20	7	
	U	21	6	
	V	22	5	911 again!
	W	23	4	7+4= 11 =judgment
	X	24	3	7+3=10
	Y	25	2	7+2= 9 =judgment
	Z	26	1	7+1=8=new beginning

JULY

ps. 30/End 7+23=30


The End 7+24=31

7+25=32

death, occult 7+26=**33**

Jesus died at 33 years old

3+3=6=imperfections, fallen



7 colors = July
rainbow flood
judgment

TU	23/6	Tammuz 6	23-24/6	Tammuz 8	Tammuz 8
W	24/6	Tammuz 7	24-25/6	Tammuz 9	Tammuz 9
TH	23/7	Av 7	23/7-24/7	Av 8	Av 8
F	24/7	Av 8	24/7-25/7	Av 9	Av 9

June 23 = July 23! b'cause Tammuz = June + July

Tammuz 6 = July 23

Tammuz 7 = July 24

(Erin's June 7 disaster!)

Lyar 6 & 23 were Nepal's major twin quakes,
thus June 23 MUST be referenced to July 23

Therefore, July 24 - Transformation/CA&NYC Judgments

Counting the letters

	count					
one	3		1,2,6,10	19	120	Av 10 Jul-26
two	3					God's tolerance
three	5		3,7,8	18	168	
four	4					
five	4					
six	3					
seven	5					
eight	5					
nine	4		4,5,9	18	180°	
ten	3			psalm 18	arc	

Maths symbols

plus

minus



A	1	26
B	2	25
C	3	24
D	4	23
E	5	22
F	6	21
G	7	20
H	8	19
I	9	18
J	10	17
K	11	16
L	12	15
M	13	14
N	14	13
O	15	12
P	16	11
Q	17	10
R	18	9
S	19	8
T	20	7
U	21	6
V	22	5
W	23	4
X	24	3
Y	25	2
Z	26	1

12,3,6,9 o'clock directions
cross, salvation, increase

3,9 o'clock directions
judgment, rainbow arc

look alike

Jul-24 multiply

the bride will increase

Decode for merged dates

A	1	26
B	2	25
C	3	24
D	4	23
E	5	22
F	6	21
G	7	20
H	8	19
I	9	18
J	10	17
K	11	16
L	12	15
M	13	14
N	14	13
O	15	12
P	16	11
Q	17	10
R	18	9
S	19	8
T	20	7
U	21	6
V	22	5
W	23	4
X	24	3
Y	25	2
Z	26	1

Freedom of God's children

Freedom of Israelites

600 Egypt's chariots

Ex. 14:7, Pharaoh

600	
------------	--

The death of Egyptians

in the midst of the sea - flood judgment July 26

perfection - transformation

		4		7
	24	3		3
	25	2		3
	26	1		3

36th triangle - 666, flood

Decode of June 6-7

		A	1	26	
		B	2	25	
		C	3	24	
		D	4	23	
		E	5	22	
		F	6	21	
		G	7	20	
		H	8	19	
		I	9	18	
		J	10	17	
		K	11	16	
		L	12	15	
6 or 7	IVI	M	13	14	Pi - 3.141
7 or 6	IV	N	14	13	
		O	15	12	
		P	16	11	
		Q	17	10	
		R	18	9	
		S	19	8	
		T	20	7	
		U	21	6	
		V	22	5	
		W	23	4	
		X	24	3	
		Y	25	2	
		Z	26	1	

Riddle for fun

You cannot have a birthday without a cake! Here are the ingredients you will need a plate, then have your cake layers ready for the cream fillings. Later, add all kinds of fruits you'd like for the toppings. Remember to blow your 2 candles, but do it before you eat your beef pie or else you will miss your 7-ya4 appointment! Remember 2 days later you'll have a sleep-over party that will surely get fluffy, fluffy it will start from 7pm-9am at Yasmine Zachary's penthouse with 10 other friends. The weather that day will be burning hot at 33 degrees Celsius, however during those 3 days you'll still be able to observe doves. The candles you'll buy must be specific, but do it after the rain comes today to prevent getting wet. Do it before 7pm when the store closes. Please buy 6cm long candles at Tuna Tree next to the Masonic lounge.



Decode for i = self

Self - pride, selfishness, self-will

A	1	26
B	2	25
C	3	24
D	4	23
E	5	22
F	6	21
G	7	20
H	8	19
I	9	18
J	10	17
K	11	16
L	12	15
M	13	14
N	14	13
O	15	12
P	16	11
Q	17	10
R	18	9
S	19	8
T	20	7
U	21	6
V	22	5
W	23	4
X	24	3
Y	25	2
Z	26	1

looks like 1

9 = judgment

6th seal

26-Jul-15

Decode for V - Devil's horns

A	1	26
B	2	25
C	3	24
D	4	23
E	5	22
F	6	21
G	7	20
H	8	19
I	9	18
J	10	17
K	11	16
L	12	15
M	13	14
N	14	13
O	15	12
P	16	11
Q	17	10
R	18	9
S	19	8
T	20	7
U	21	6
V	22	5
W	23	4
X	24	3
Y	25	2
Z	26	1

At 33° hits Feb/Nov & Jan/Apr on the wheel

Wheel - Jewish & Gregorian calendars merged

V = 11 & 1 o'clock, (11x1)+22=33°

July 26 = 33° & 22 - death, the end of the end

November (11) - end, disaster

April (4) - barley harvest, blood moon, passover

33° at Feb (2) - 33x2=66, June 6, 2015 -> 666

Erin's vision of inverted moon



masonic 33°

22-5= masonic 17° - Abaddon Rev. 9:11!

2 skewed V

July 25-26

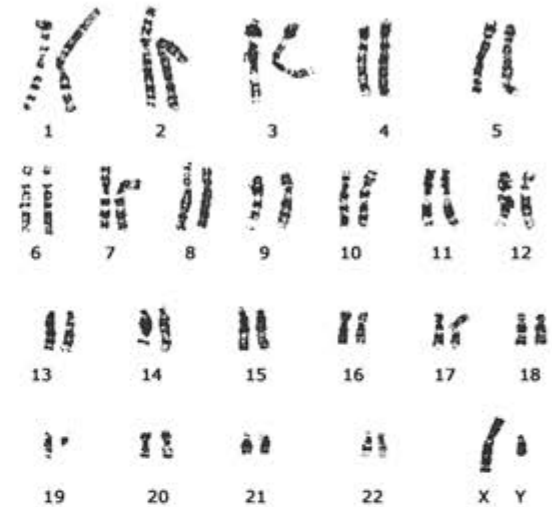
911 Attack - USA east & west coasts

Decode for the meaning of WXYZ

CA & NYC in red, bride in purple

A	1	26
B	2	25
C	3	24
D	4	23
E	5	22
F	6	21
G	7	20
H	8	19
I	9	18
J	10	17
K	11	16
L	12	15
M	13	14
N	14	13
O	15	12
P	16	11
Q	17	10
R	18	9
S	19	8
T	20	7
U	21	6
V	22	5

- X** union - lines crossed
- sexual immorality
- ancient symbol - transformation
- mountain - high places
- cross - bride crucified
- symbol for death
- egyptian mummies crossed arms
- egypt represents the world
- x axis - horizontal (subtract sign)
- 2 V make up X = 44 - judgment
- romans X = 10 - 10 commandments
- 23 chromosomes (x), 23x3=69 (hiding place)
- X - 11,1,7,5 o'clock directions = 24
- July as May by Av as May 24 Pentecost
- X marks as treasure on a treasure map
- X as Xmas representing birth of Christ/bride
- X = nothing, no, bad, fail, error
- 2+4=6 as 666 & June 6, 2015



female (brides)

2X-2xchromosomes :	W	23	4		30 = END of month
masonic symbol	X	24	3	Jul-24	bride - 3 days of lights day break
11+1+6=ps. 18	Y	25	2	sounds "why" - confusion, chaos	30
zzz sleep/rest	Z	26	1	Sabbath rest day - Sunday will be July 26	

3 & 9 o'clock direction, rainbow flood judgment - global earth shaking

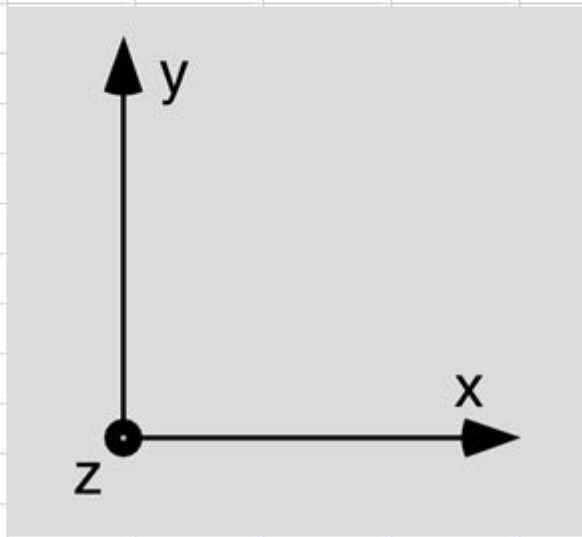
psalm 30

determine = END something - death, Final
23rd pair chromosome xy determine gender

Decode for XYZ Axis for July 24-26

A	1	26
B	2	25
C	3	24
D	4	23
E	5	22
F	6	21
G	7	20
H	8	19
I	9	18
J	10	17
K	11	16
L	12	15
M	13	14
N	14	13
O	15	12
P	16	11
Q	17	10
R	18	9
S	19	8
T	20	7
U	21	6
V	22	5
W	23	4
X	24	3
Y	25	2
Z	26	1

- X June/East/Air/Light/3:00 - June 24 death
- Y 12:00 - July 25 merged with 26, darkest before dawn - freedom
- Z Elevation of the bride on July 26, at pt. 0 (Pi again)



Jul-24

countdown to first call

Decode Av 9-11 (July 25-26 as 1 day)

YZ Plane = Square on Av = 22 in a square

A	1	26
B	2	25
C	3	24
D	4	23
E	5	22
F	6	21
G	7	20
H	8	19
I	9	18
J	10	17
K	11	16
L	12	15
M	13	14
N	14	13
O	15	12
P	16	11
Q	17	10
R	18	9
S	19	8
T	20	7
U	21	6
V	22	5
W	23	4
X	24	3
Y	25	2
Z	26	1

